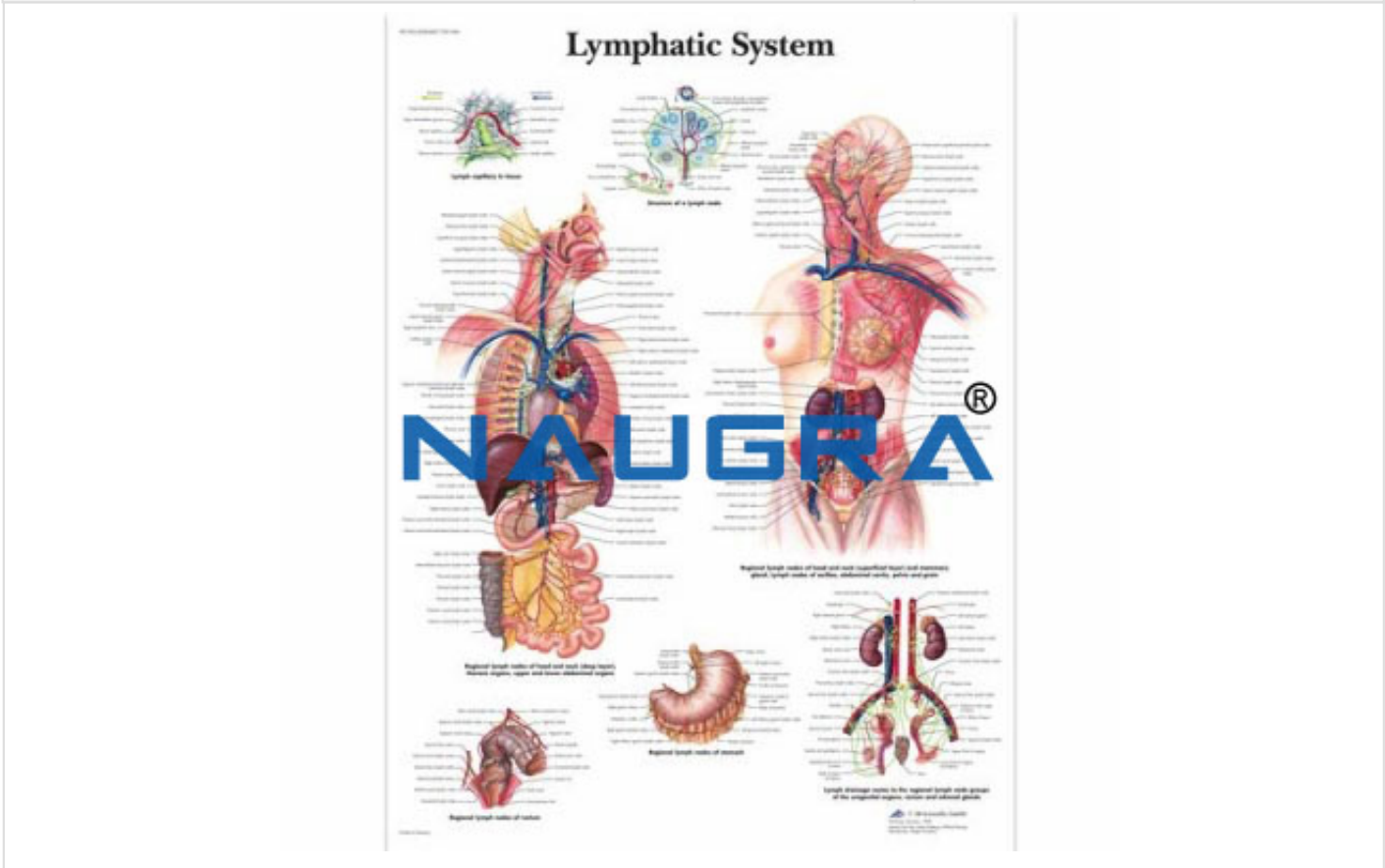


<b>Product Name :</b> Human Physiology Charts for Educational Lab	<b>Product Code :</b> CHARTS-EDU-002
--	---



**Description :**

Human Physiology Charts for Educational Lab

**Technical Specification :**

Human Physiology Charts (Size 75 X 100 Cms) - Printed on non-tearable, weather proof, markable and washable. Polyart plastic sheet. Supplied loose or fitted with plastic rollers at top and bottom for hanging. Available Charts in Language (ENGLISH & ARABIC)

Human Physiology Charts (Size 75 X 100 Cms):

The Lymphatic System in Human

Excretory System in Human -Kidney, L.S.

Excretory System in Human -Ureters

Excretory System in Human -Urinary bladder

Excretory System in Human -Malpighian Corpuscle

T.S. in Human Skin

Reproductive System in Human

Human Brain External Features

L.S. in Human eye-Eye Muscle

L.S. in Human eye-Tear glands

L.S. in Human eye-Physiological diseases of eye

Ear in Human and its parts

Skeletal System in Human

Endocrine glands of Human

Digestive System in Human

Circulatory System in Human -Types of blood cells

Circulatory System in Human -L.S. in heart & T.S. in blood vessel

Circulatory System in Human -Vein valves

Circulatory System in Human -Systematic & Pulmonary circulation in human

The Respiratory System in Human -Larynx

The Respiratory System in Human-Trachae

The Respiratory System in Human-Alveolus

Human-L.S. in Central Nervous System (CNS)

Region in which the nerval impulses transport

from to central nervous system through

the synapse in Human

Human Reflection Arch

Muscular System

Nervous System

Teeth

Metabolism

DNA Molecule Nervous System & Sensory Organs

## Naugra Export

**Website:** [www.naugraexport.com](http://www.naugraexport.com), **Email:** [sales@naugraexport.com](mailto:sales@naugraexport.com)

**Address:** 6148/6, Guru Nanak Marg, Ambala Cantt, Haryana, India, **Phone:** +91-0171-2643080, 2601773